



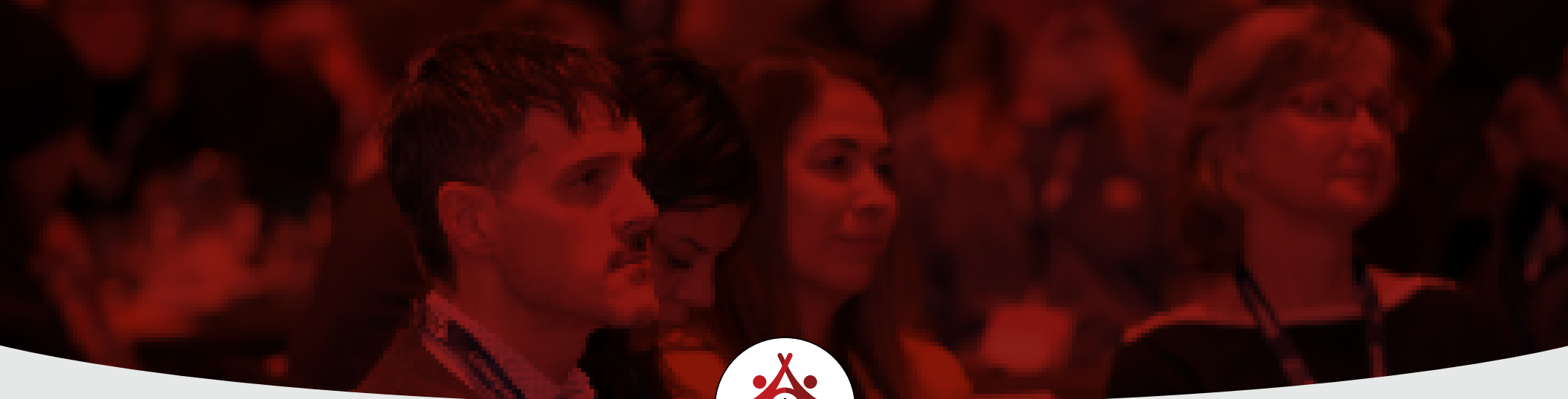
# FIRST NATIONS HOUSING CONFERENCE

STRONGER ALLIANCES  
STRONGER HOMES



## DELEGATE'S GUIDE TOPIC: EXTERIOR SIDING

FOR FEB 25 | 2026, SCANDIA 1 / 2



We invite you to  
join us for a

# Virtual Community Visit

An opportunity to meet and discuss your community needs, and  
how becoming a member of our Community can help.

Connect with us:  
807-622-1979

[INFO@FIRSTNATIONSHOUSINGCOMMUNITY.COM](mailto:INFO@FIRSTNATIONSHOUSINGCOMMUNITY.COM)

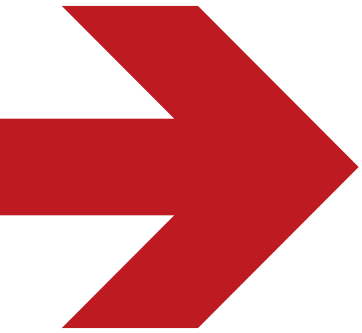


FIRST  
NATIONS  
HOUSING  
COMMUNITY

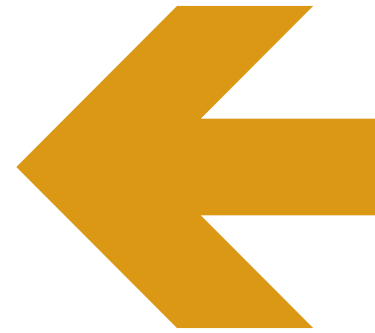
Or visit:

[FIRSTNATIONSHOUSINGCOMMUNITY.COM](http://FIRSTNATIONSHOUSINGCOMMUNITY.COM)





SPONSORED BY



# CONTENTS

Youth Skills Training Agenda	5
Introduction	6
Setting the Stage	8
Facilitators	9
Safety Protocols	10
Big Picture	11
PreShow Build - Where We Start	12
Challenge 1	13
Challenge 2	21
Challenge 3	28
Acknowledgments	35

Hosted By



FIRST NATIONS HOUSING COMMUNITY



EXPLORE  
CHALLENGES  
EMPOWERING  
SUSTAINABILITY

EXPLORE  
CHALLENGES  
EMPOWERING  
SUSTAINABILITY

**A FOLLOW-  
ALONG GUIDE  
TO THE 2026  
BUILDERS  
CHALLENGE**

**THIS YEAR'S  
TOPIC:**

**EXTERIOR  
SIDING**



# YOUTH SKILLS TRAINING AGENDA

This year at the 2026 Builders Challenge: Focus on Youth, First Nations students from Hammarskjold High School, Nipigon-Red Rock District High School, and Matawa Education & Care Centre will join us for a three-day, hands-on learning experience focused on exterior siding installation. The curriculum includes :

## DAY 1 | TUES, FEB 24

- 7:45 - 8:00 AM: Arrival
- 8:00 - 9:00 AM: Check-In
- 9:00 - 10:30 AM: Opening Ceremony (Introduction)
- 10:30 - 10:45 AM: Health Break
- 10:45 - 11:45 AM: Practical Session: Installing Flashing
- 11:45 - 1:00 PM: Lunch Break
- 1:00 - 2:00 PM: Practical Session: Installing Trim
- 2:00 - 3:00 PM: Practical Session: Installing Lap Sliding Boards

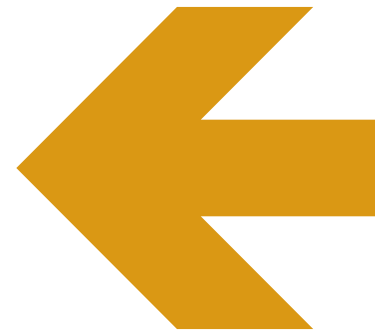
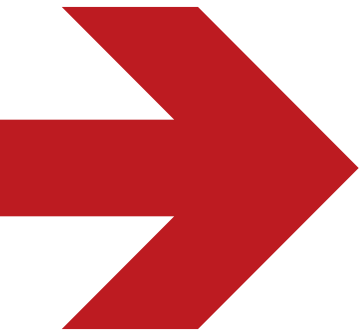
## DAY 2 | WED, FEB 25

- 8:45 - 9:00 AM: Arrival
- 9:00 - 10:00 AM: Check-In
- 10:00 - 10:45 AM: Builders Challenge: Focus on Youth, Installing Flashing
- 10:45 - 11:15 AM: Health Break
- 11:15 - 12:00 PM: Builders Challenge: Focus on Youth, Installing Trim
- 12:00 - 1:15 PM: Lunch Break
- 2:15 - 3:00 PM: Builders Challenge: Focus on Youth, Installing Lap Sliding Boards
- 3:00 - 3:30 PM: Challenge Wrap up

## DAY 3 | THURS, FEB 26

- 9:30 - 9:45 AM: Arrival
- 9:45 - 10:00 AM: Check-In
- 9:00 - 11:00 AM: Day One Recap
- 11:00 - 11:15 AM: Health Break
- 11:15 - 12:15 PM: Day Two Recap
- 11:45 - 1:00 PM: Lunch
- 1:00 - 3:00 PM: Youth Skills Training Program
- 3:00 - 3:15 PM: Health Break
- 3:15 - 4:15 PM: Youth Skills Challenge Certification



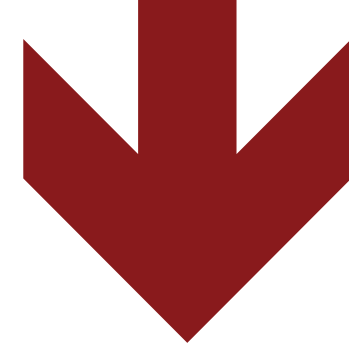


# INTRODUCTION

The Builders Challenge – Focus on Youth Training Guide supports the Exterior Siding project by outlining the key principles and techniques involved in proper wall assembly. The challenge focuses on three essential components of exterior construction: effective water management through flashing installation, accurate wall preparation using strapping and trim, and the precise installation of lap siding boards.

Each stage plays a critical role in protecting the structure from moisture, ensuring durability, and achieving a clean, professional finish. Attention to alignment, fastening methods, drainage slope, board placement, and joint detailing reflects real-world construction standards and best practices.

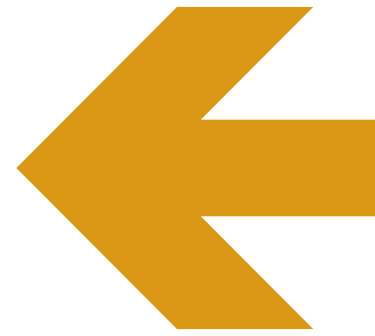
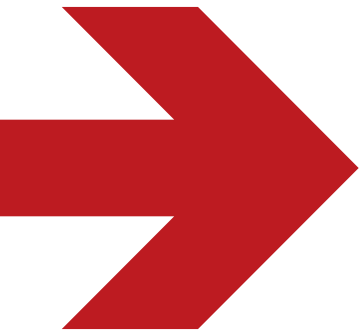
This guide provides an overview of the technical elements that form the foundation of the this year's Builders Challenge, reinforcing the importance of planning, safety, and craftsmanship in exterior finishing work.



## LEADING THE BUILDERS CHALLENGE AT THE FIRST NATIONS HOUSING CONFERENCE

- Meet the educators guiding today's hands-on building competition. A team dedicated to empowering youth, sparking confidence, and showcasing the skilled trades in action.
- These facilitators also teach in the Indigenous Skilled Trades Training Programs, where students learn by building full-scale homes for First Nations communities
- They will bring their experiences directly into the builder's challenge arena.





# SETTING THE STAGE

## FOR THE BUILDERS CHALLENGE

Today, Builders Challenge participants will:

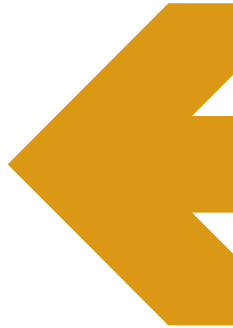
- Demonstrate hands-on technical skills
- Work collaboratively under time pressure
- Learn from trades experts and educators
- Celebrate their growing strengths as future tradespeople and community leaders



**This challenge isn't just a competition. It's a celebration of youth, community, and the power of education that is grounded in culture, purpose, and real-world impact.**



# FACILITATORS



**Tim Awlward**

Indigenous Skilled Trades Training Program  
Instructor Nipigon-Red Rock High School



**Kyle Trodd**

Program Teacher at Hammarskjold High School



**Cole Moro**

Program Teacher at Hammarskjold High School



**Maurice Thiboutot**

Program Teacher at Nipigon-Red Rock High  
School



**Lisa MacLeod**

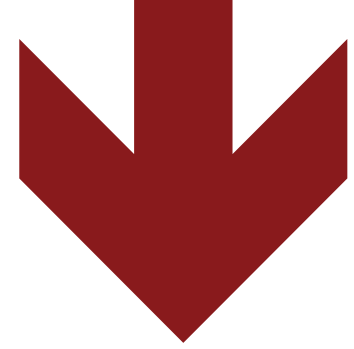
Program Lead and Vice-Principal Lisa MacLeod  
(Superior-Greenstone District School Board &  
Lakehead Public Schools)



# SAFETY PROTOCOLS

## BASIC RULES OF SECURITY FOR THIS TRAINING SESSION

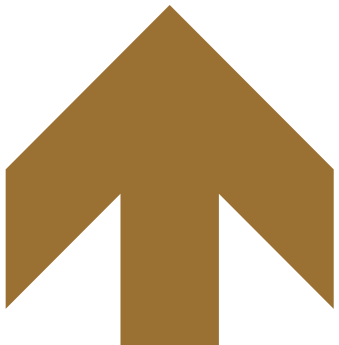
- Wear your safety glasses whenever operating a power tool, even just an impact driver. Screws or saw dust can fly into your eye before you can react and close your eye. Wear your safety glasses when watching close up to someone else who is drilling, cutting or hammering as well
- Any time you change blades in a tool like the Jigsaw, remove the battery to be sure the saw won't jump into action while you have your fingers on the blade
- Always keep the shoe of the jigsaw in contact with the surface being cut during any cut –don't ride the blade, the saw may go out of control
- When using a utility knife, keep your fingers and hands out of the line of the cut – the knife could slip
- When using hand and power tools, gloves serve two purposes:
  1. To improve your grip avoiding slipping, and
  2. To protect from getting cut. You have been given special cut resistant gloves made for working with sharp edge sheet metal, glass and utility knives
- When on a renovation site where work is happening over your head, always wear your hard hat
- If you are working in the open where vehicles pass, always wear a reflector vest
- If working with small material that can slip easily, use clamps to secure it before using your tools
- If at any time you feel out of balance or uncomfortable or even just a bit tired, stop and think about safety before continuing
- The Saint John's Ambulance service is stationed in the hotel during this training. Don't hesitate to report to them if you have a need.



# BIG PICTURE

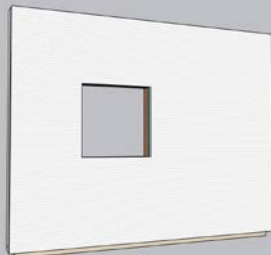
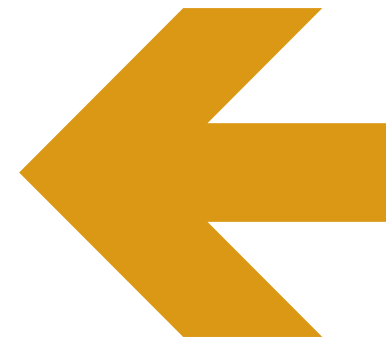
## Start with the Whole Picture in Mind

1. Install Flashing
2. Install Trim
3. Install Lap Sliding Boards

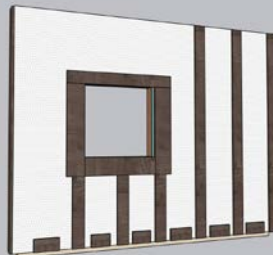




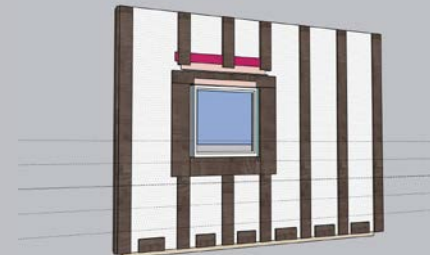
# PRESHOW BUILD – WHERE WE START



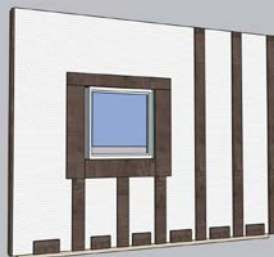
**Weather Barrier**



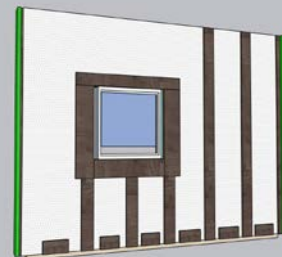
**Strapping**



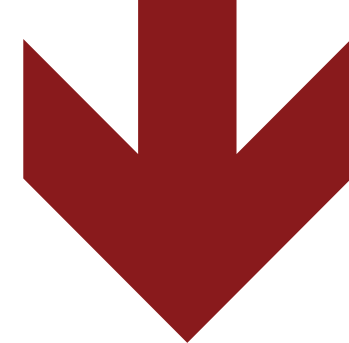
**Chalk Lines**



**Window**



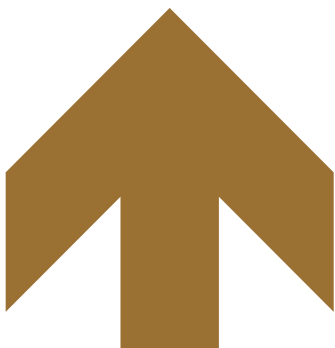
**Trim**

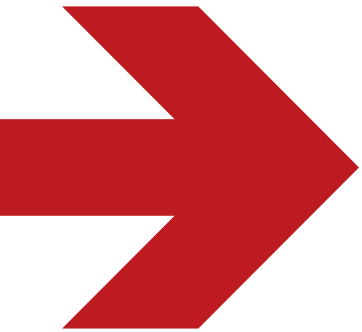


# CHALLENGE 1

## INSTALLING FLASHING

Breakdown of the challenge: Participants focus on proper water management, learning to install flashing, so water is directed away from walls and windows. They practice folding, angling, and fastening the flashings, including hidden nails, while managing a slight slope for effective drainage. This challenge demonstrates how attention to detail at this stage protects the structure and sets the foundation for the siding installation.





## KEY OBJECTIVES

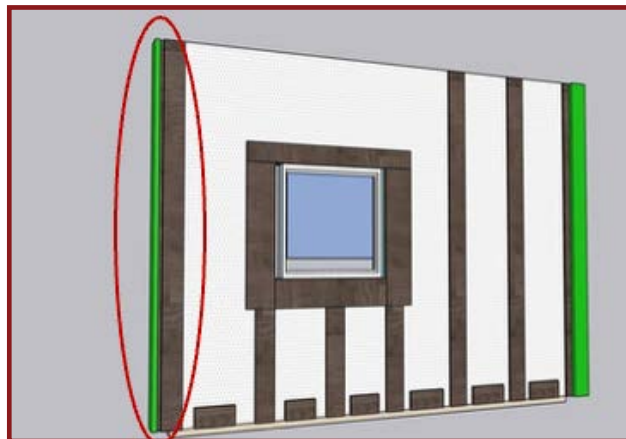
- Secure Strapping
- Locating and marking studs
- Install First Flashing overhanging the window
- Install trim around window
- Install Second flashing overhanging the Trim
- Install window trim
- Seal to the weather barrier

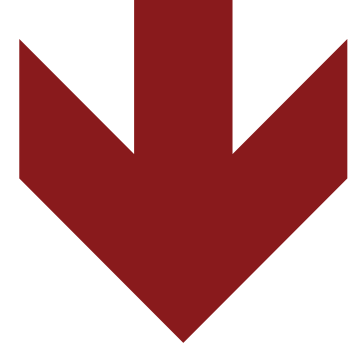




## LOCATING STUDS AND MARKING FOR ACCURATE PLACEMENT

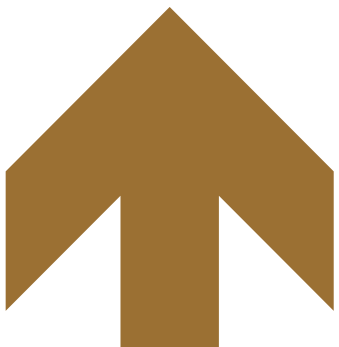
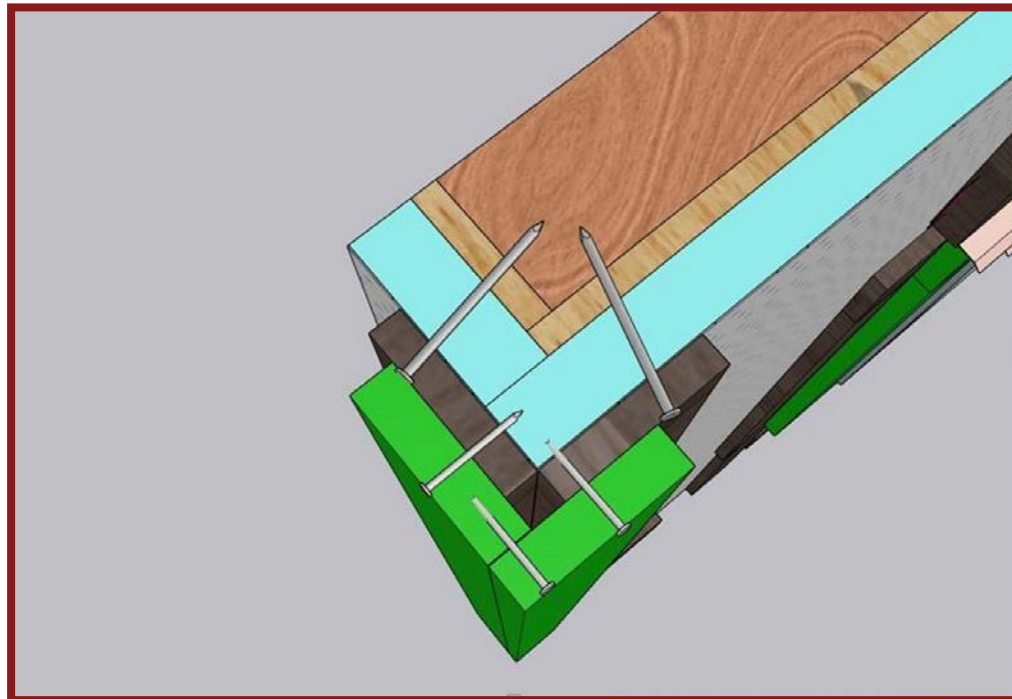
- Strapping must be solidly attached to the studs, which are hidden behind the insulation
- Nail one piece of strapping to the left corner to complete the corner. (The face, not the side plank)

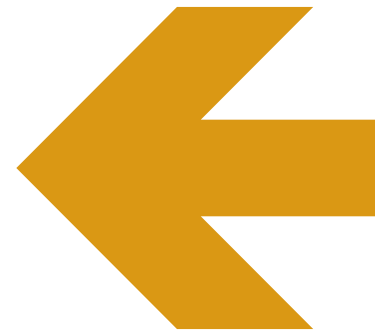
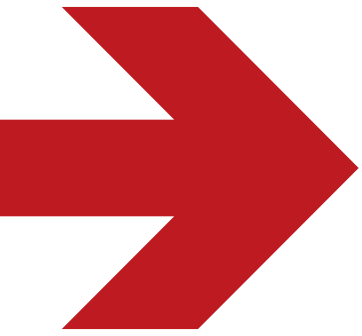




## HIT THE CORNER STUD

Properly nail the corner, ensuring you go into the **stud**, and **not** just into the insulation

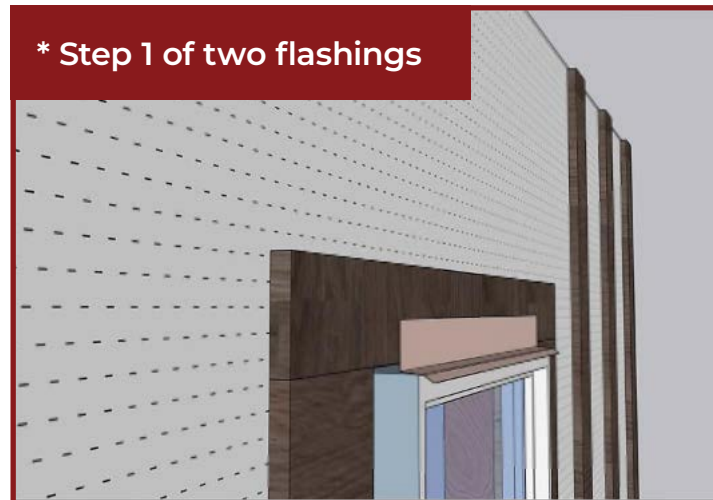


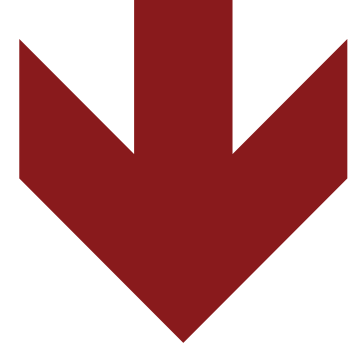


## FITTING AND FASTENING WINDOW FLASHING

- Adjust to fit before nailing
- Nail flashing properly

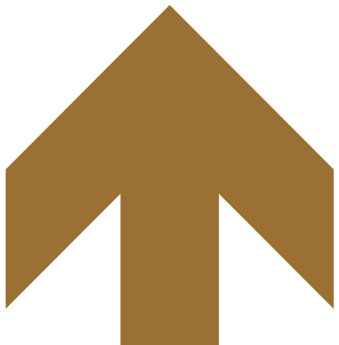
**Note: Flashing is often improperly installed or left out entirely**

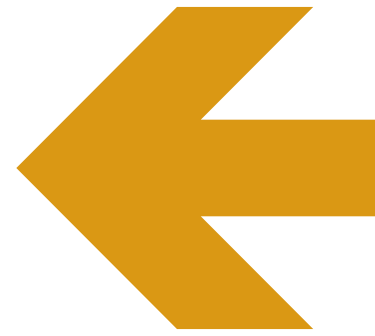
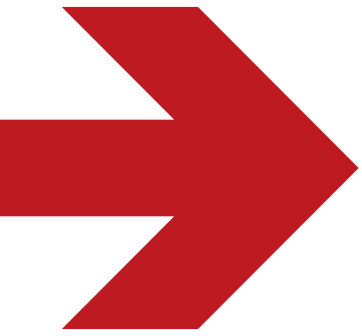




## NAIL ON THE WINDOW TRIM

- Place window trim frame snug on bottom with 3/8 inch gap above the flashing
- Nail onto strapping

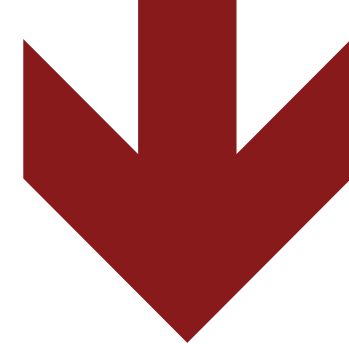




## NAIL ON TRIM FLASHING

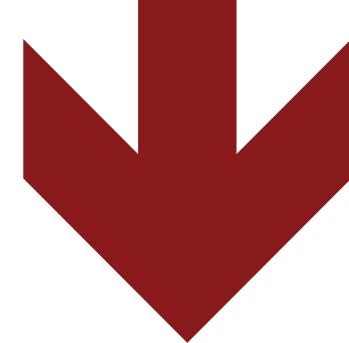
- Single long nail
- Use a 2-1/2 inch nail firmly to stud
- Without denting the flashing





## SEALING FLASHING TO THE WEATHER BARRIER / COVERING NAIL





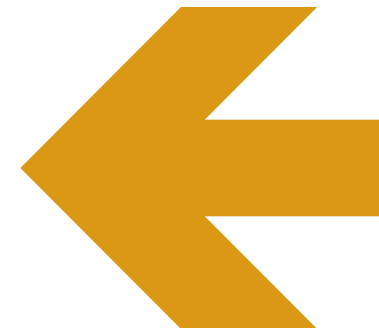
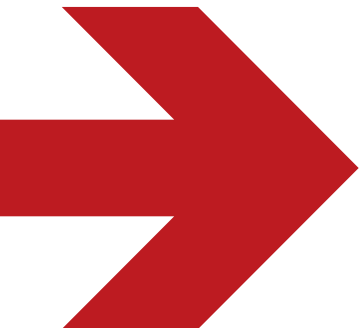
# CHALLENGE 2

## INSTALLING TRIM

**Lead Facilitator – Maurice Thiboutot**

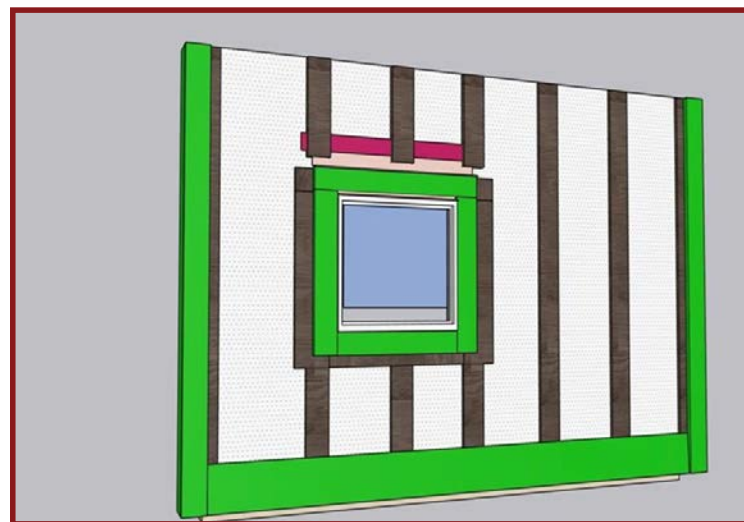
Participants prepare the wall by installing missing strapping and trim, creating a framework that will support the siding boards. Participants learn to align the trim correctly, anchor nails into studs and strapping, and handle corners and insulation pushouts. This challenge reinforces the importance of preparation in achieving a smooth, precise siding installation.

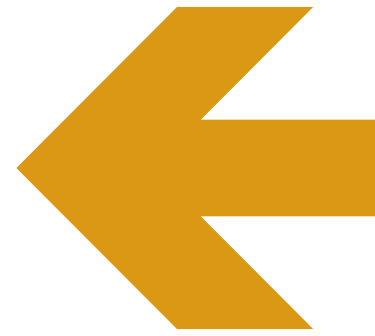
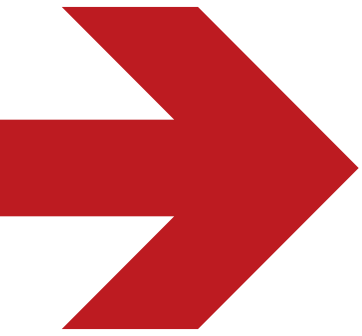




## KEY OBJECTIVES

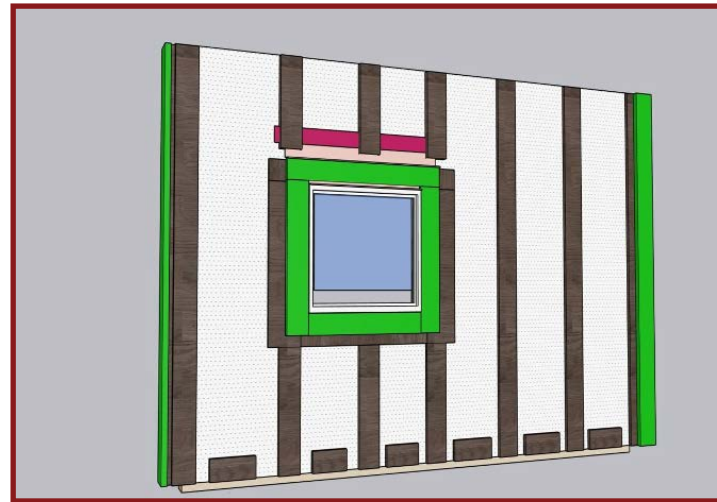
- Nail on vertical strapping over the window
- Nail on Corner Trim
- Position, level, and nail on starter strip
- Nail on one full piece of LapBoard

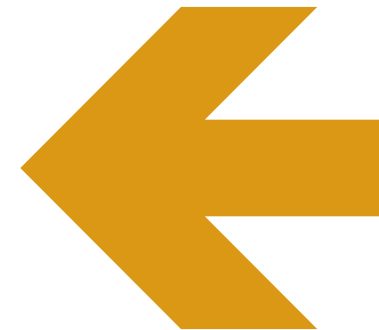
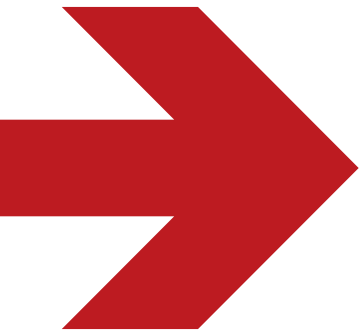




## NAIL ON VERTICAL STRAPPING OVER THE WINDOW

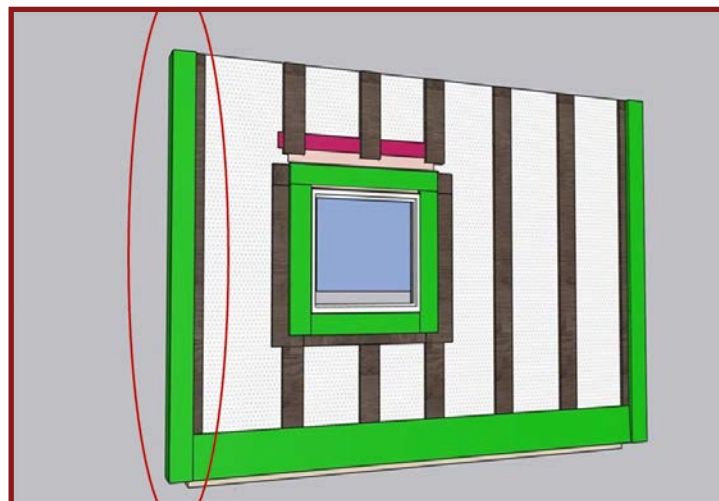
- Nail on vertical strapping over the window
- Be careful not to nail through the flashing
- Leave 2 inch drainage space between strapping and window

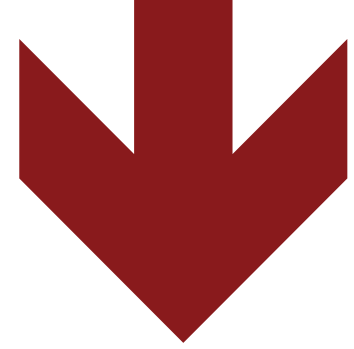




## NAIL ON CORNER TRIM

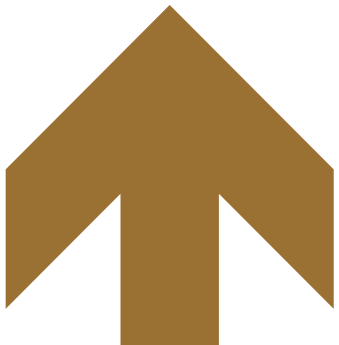
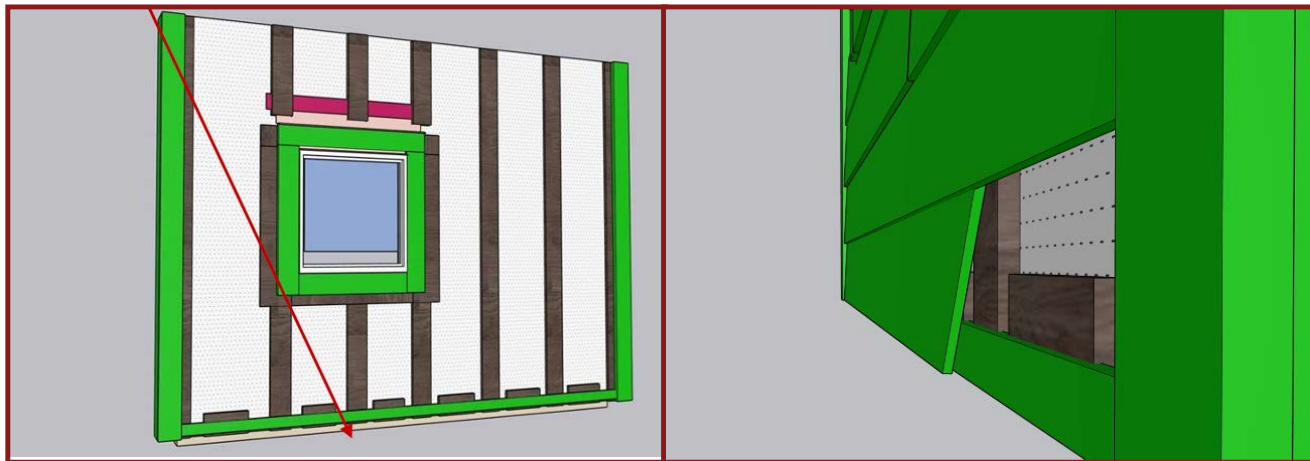
- Now we nail on the missing corner trim piece over the strapping
- Nails should be spaced every 8 inches

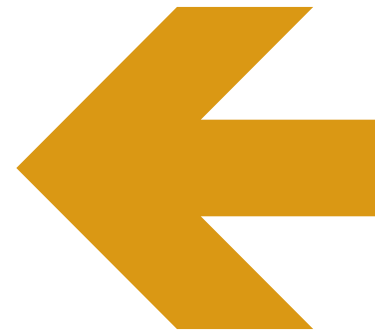
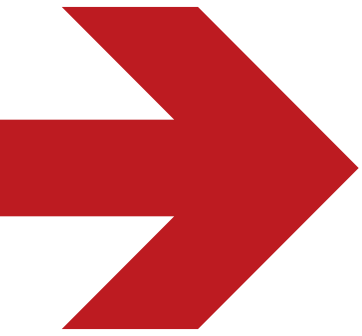




## POSITION, LEVEL AND NAIL ON STARTER STRIP

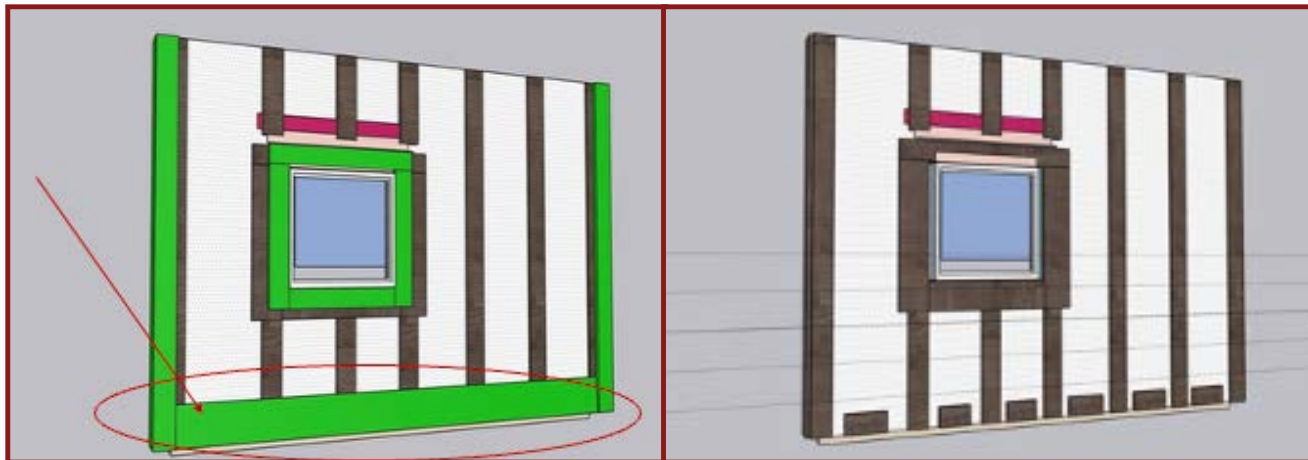
- Starter strip must be straight and Level
- Starter strip is typically 1-1/2 inch x 3/8 wide

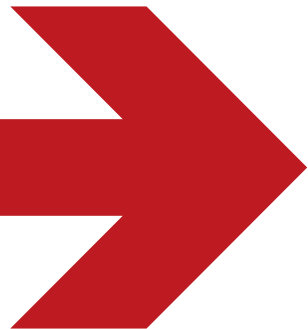




## NAIL ON ONE FULL PIECE OF LAP BOARD

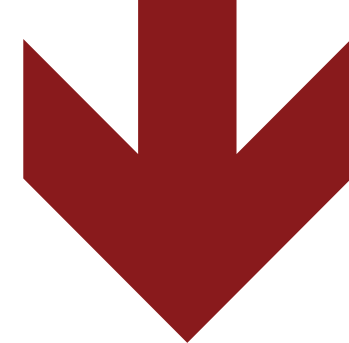
- Chalk Lines are important
- There must be a  $\frac{3}{16}$ th gap between the boards and trim
- Double nail the LP Siding with 1 inch nails
- Nailing is over the strapping boards
- Practice accurate hammering





## GECKO VS CHALK LINES





# CHALLENGE 3

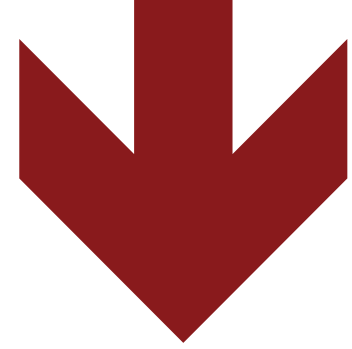
## INSTALLING LAP SLIDING BOARDS

### Lead Facilitator - Kyle Trodd

The final stage brings everything together as participants install lap siding boards with proper overlaps, hidden fasteners, and strategically placed butt joints. Participants plan board placement around windows, demonstrate where caulking would go, and use small tools and jigs to ensure a neat finish.

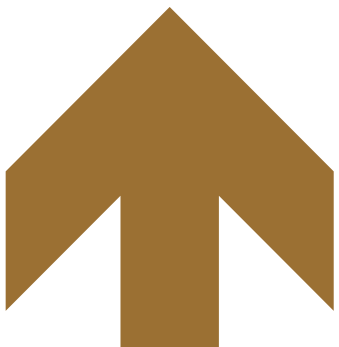
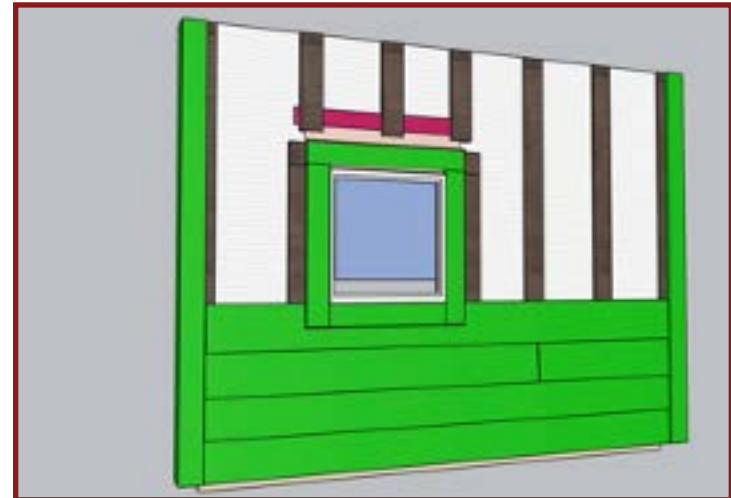
By focusing on technique, planning, and detail, participants learn to construct walls that are durable and flawlessly installed.

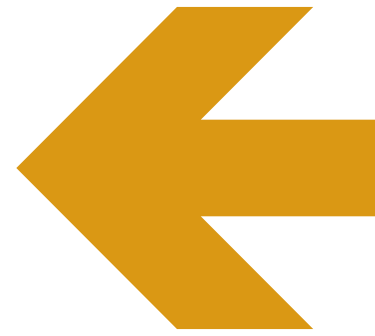
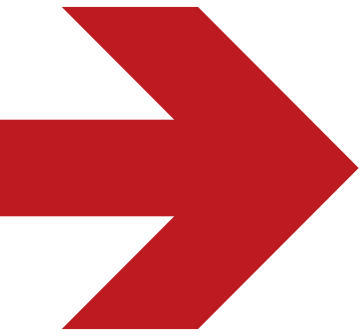




## KEY OBJECTIVES

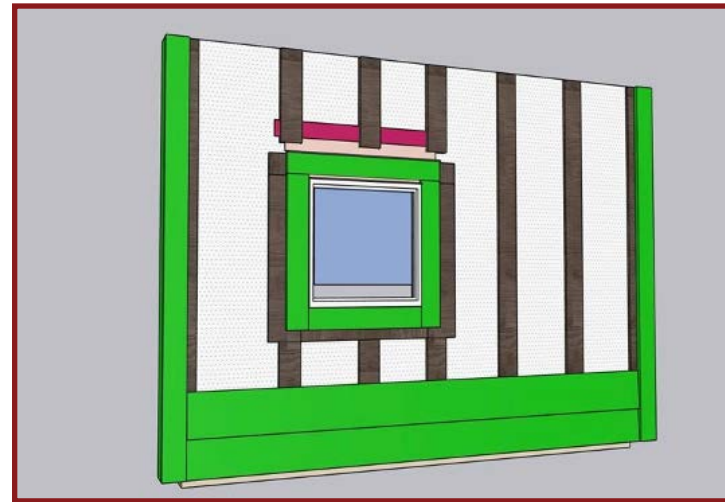
- Install 2nd row - full board
- Install 3rd board with a Butt Joint
- Quickly nail on full boards until you reach the window
- Measure and cut notch in lapboard to fit around the bottom of the window
- Mark caulking locations
- Add boards until finished

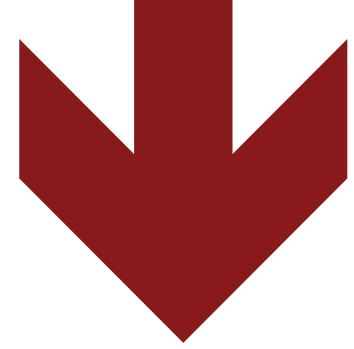




## INSTALL 2ND ROW - FULL BOARD

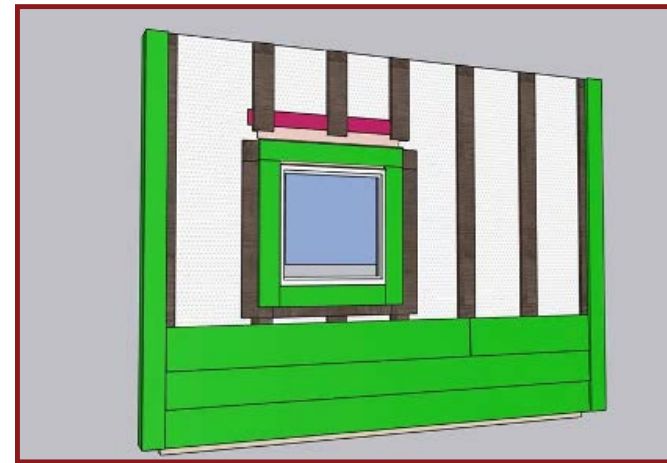
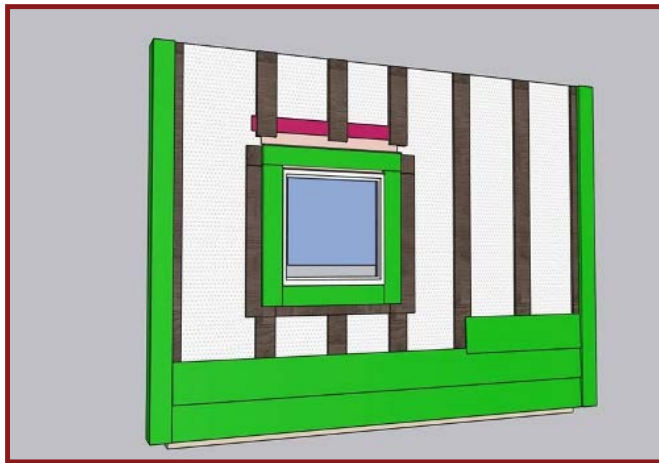
- There must be a 3/16 inch gap between the boards and trim
- Double Nail Lap Board on all strapping
- 1 inch nails

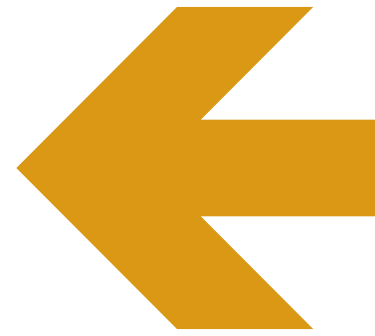
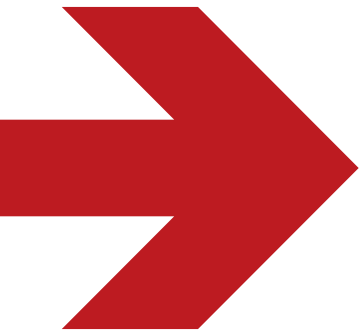




## INSTALL 3RD BOARD WITH A BUTT JOINT

- Joint always falls over the middle of the strapping
- 2 nails at the end of any lap board





## LEVELING TECHNIQUES & BUTT JOINTS

All plank butt joints must fall over strapping board to secure both boards

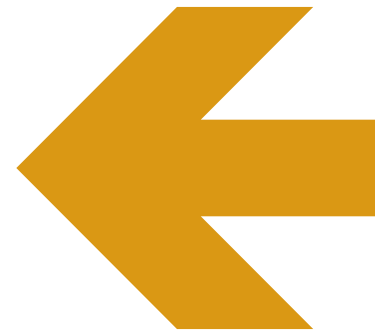
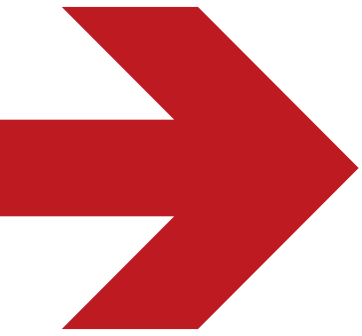




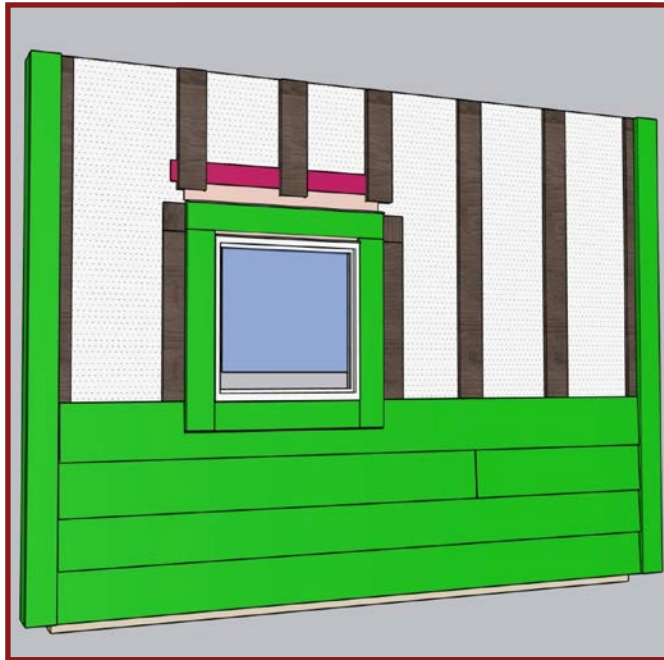
## MEASURE AND CUT NOTCH IN LAPBOARD TO FIT AROUND THE BOTTOM OF THE WINDOW

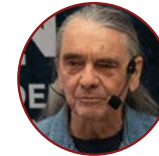
- Measure and cut window notch to fit around window frame
- Must fit snug to bottom of the window trim frame
- Cut out and recess for the window frame
- Nail on to strapping
- **Over the window: there must be a 3/8 inch gap for the flashing over the trim frame.**





## MARK CAULKING LOCATIONS





JON EAKES

# ACKNOWLEDGMENTS

**As we conclude the Builders Challenge: Focus on Youth program for 2026, we extend our heartfelt gratitude to everyone who made this initiative a success.**

A special thank you **Indigenous Skills Trades Training Program** for their invaluable support, guidance, and commitment to empowering youth through hands-on learning and skill development. We are excited to work with our new hosts of this event and look forward to a successful first event together. At the same time, we would also like to extend a special thank you to **Jon Eakes** who has hosted this event for the last 16 years. Although unable to attend this year, he was involved in helping our new team of hosts with the handover.

A special thank you to **Colin McFatridge and the Northwest Timber Mart team** for their generous support as the presenting sponsor of this year's Builders Challenge – Focus on Youth. Their supply of materials and tools and their pre-building of the in-class and Builder's Challenge sets was invaluable.

We also recognize the dedication of our **First Nation Housing Community**, their **Builder's Challenge Committee**, and our funder **CMHC** whose enthusiasm and hard work has brought this challenge to life. Your contributions have not only helped build structures but have also laid the foundation for future careers and opportunities for young individuals in the skilled trades.

**Thank you to our FNHC delegates for being part of this journey—we look forward to continuing to inspire and support our First Nations Youth: our next generation of builders.**



MATANA FIRST NATIONS MANAGEMENT



**FIRST NATIONS  
HOUSING CONFERENCE**  
STRONGER ALLIANCES  
STRONGER HOMES

**THANK YOU TO OUR  
PARTICIPATING YOUTH  
OUR NEXT GENERATION  
OF BUILDERS**